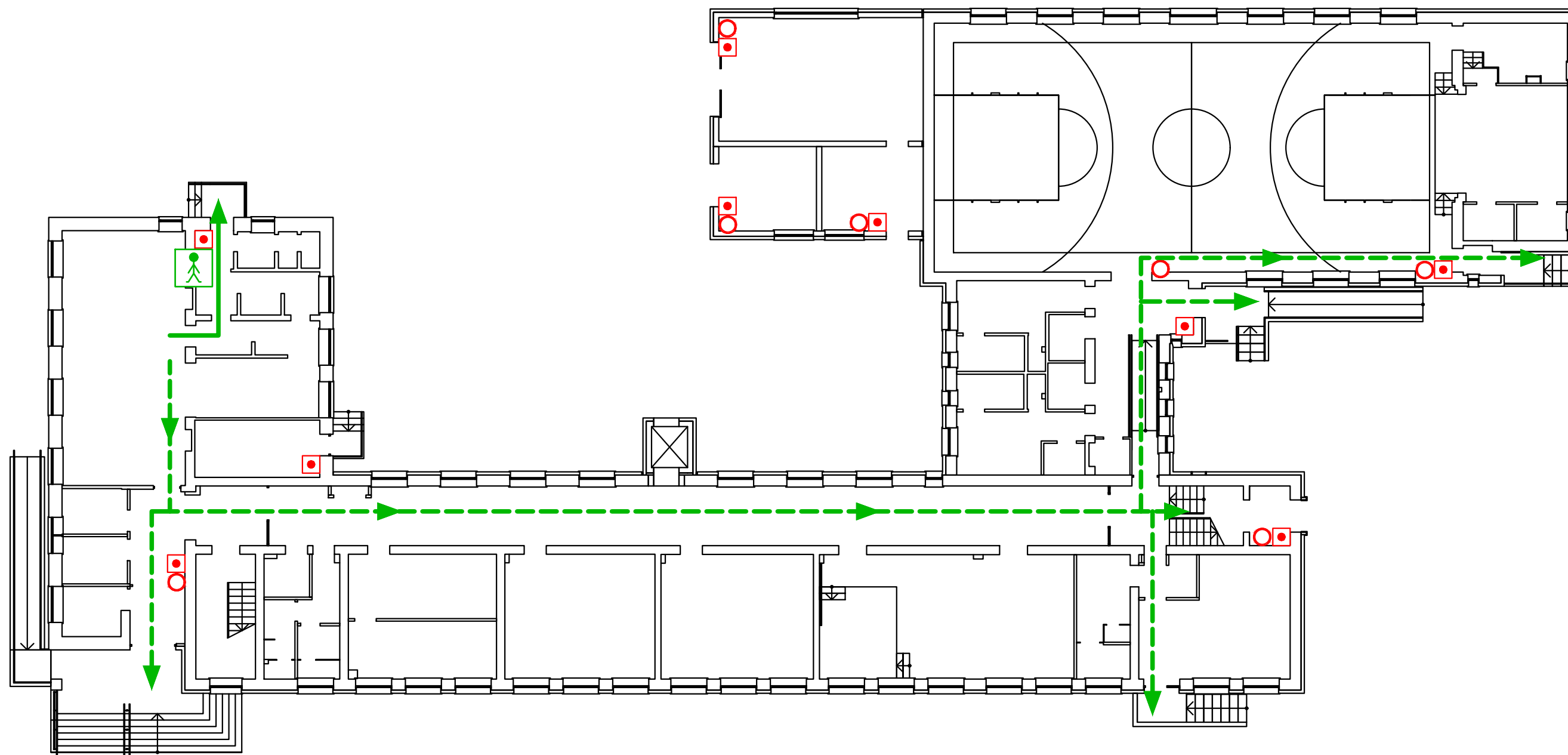





# PIRMO AUKŠTO ŽMONIŲ EVAKAVIMO PLANAS



## Evacuation plan of First floor




Tvirtinu:  
 \_\_\_\_\_  
 \_\_\_\_\_



### Sutartiniai ženklai

-  Ugnies gesintuvas  
Fire extinguisher
-  Gaisrinis čiaupas  
Fire hydrant
-  Gaisrinės signalizacijos mygtukas  
Fire alarm button

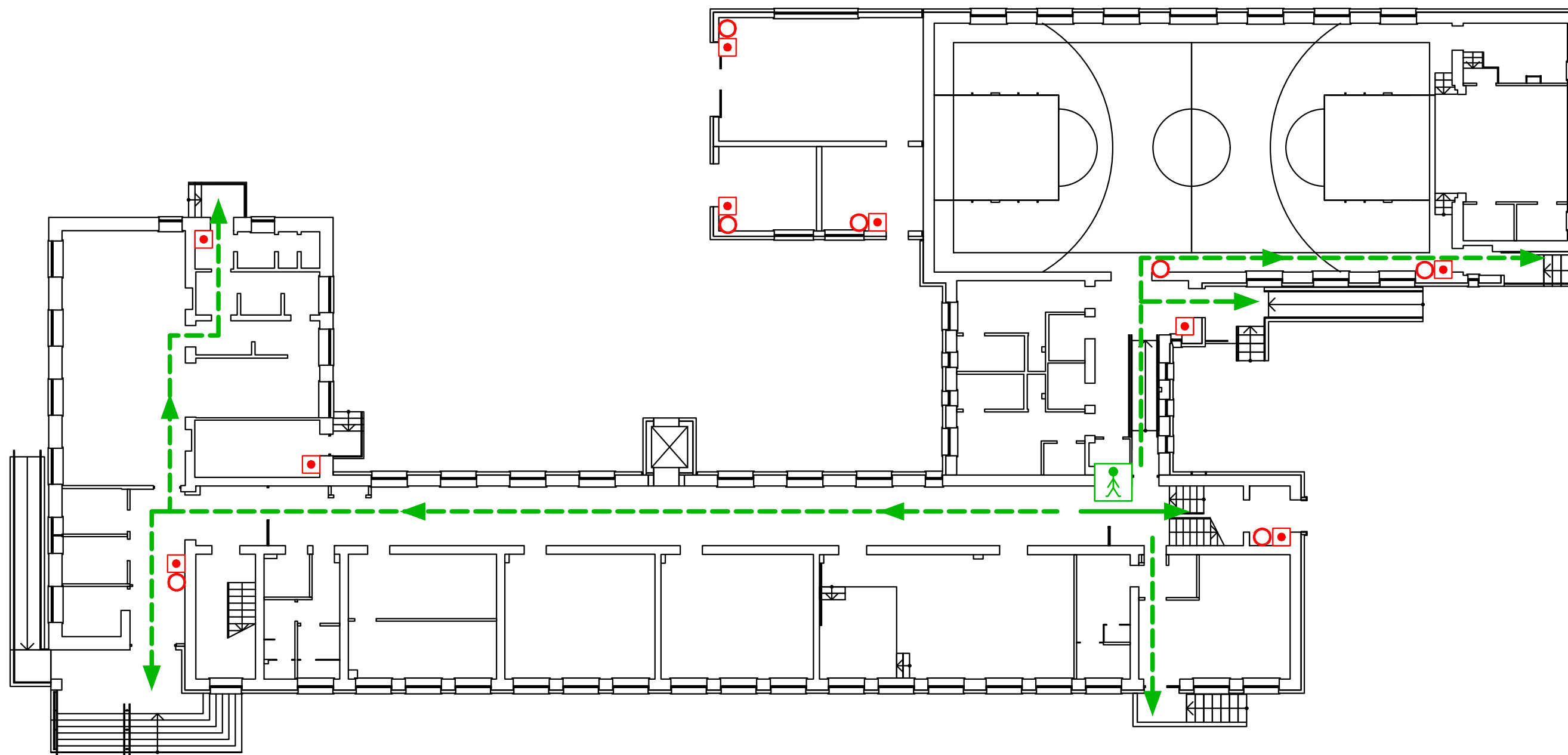
-  Elektros skydelis  
Electric shield
-  Telefonas  
Emergency phone

-  Pagrindinis evakuacijos kelias  
Main exit (evacuation) route
-  Atsarginis evakuacijos kelias  
Alternate exit (evacuation) route
-  Jūs esate čia (plano vieta)  
You are here




# PIRMO AUKŠTO ŽMONIŲ EVAKAVIMO PLANAS



## Evacuation plan of First floor




Tvirtinu: \_\_\_\_\_  
 \_\_\_\_\_



### Sutartiniai ženklai

-  Ugnies gesintuvas  
Fire extinguisher
-  Gaisrinis čiaupas  
Fire hydrant
-  Gaisrinės signalizacijos mygtukas  
Fire alarm button

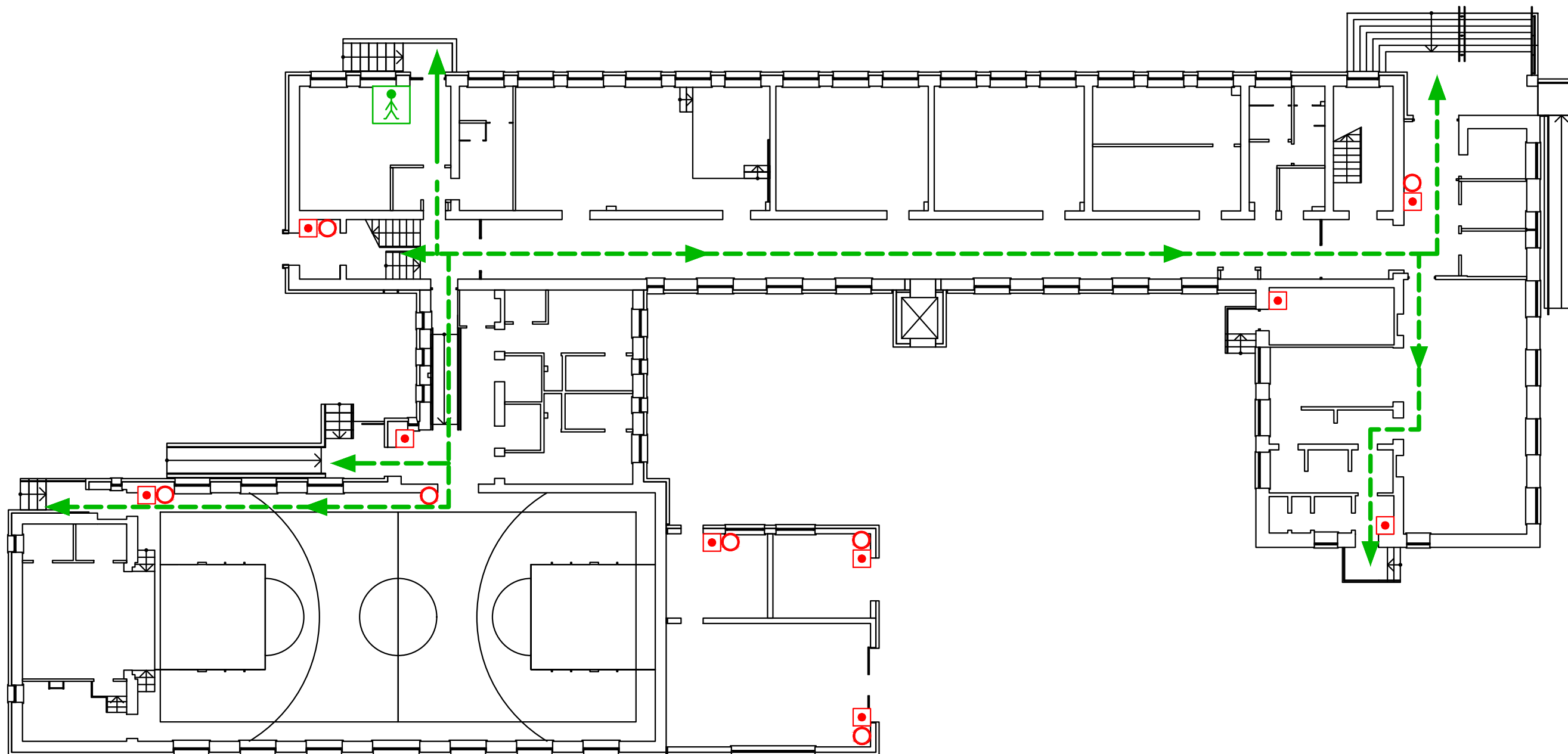
-  Elektros skydelis  
Electric shield
-  Telefonas  
Emergency phone

-  Pagrindinis evakuacijos kelias  
Main exit (evacuation) route
-  Atsarginis evakuacijos kelias  
Alternate exit (evacuation) route
-  Jūs esate čia (plano vieta)  
You are here




# PIRMO AUKŠTO ŽMONIŲ EVAKAVIMO PLANAS



## Evacuation plan of First floor




Tvirtinu: \_\_\_\_\_  
 \_\_\_\_\_



### Sutartiniai ženklai

-  Ugnies gesintuvas  
Fire extinguisher
-  Gaisrinis čiaupas  
Fire hydrant
-  Gaisrinės signalizacijos mygtukas  
Fire alarm button

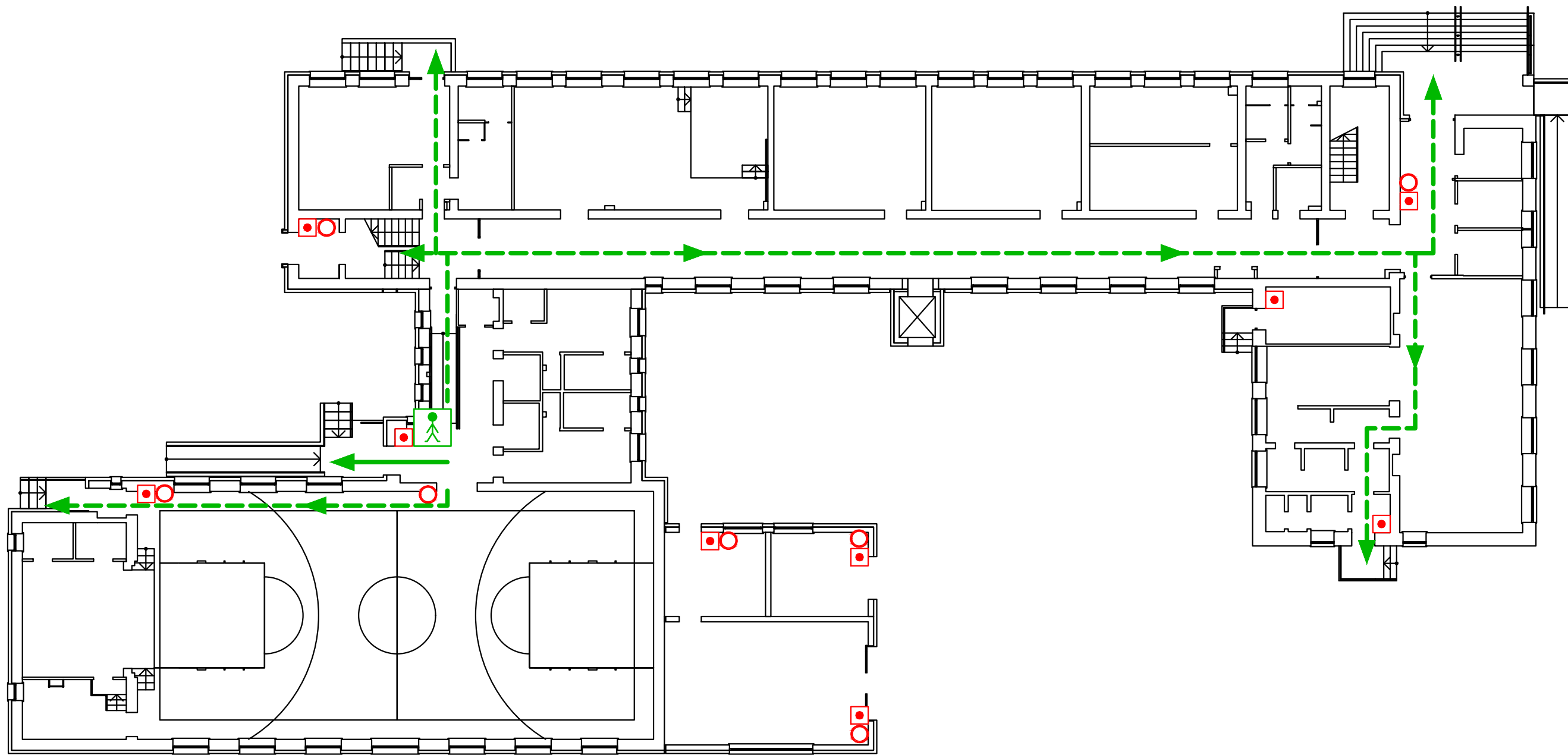
-  Elektros skydelis  
Electric shield
-  Telefonas  
Emergency phone

-  Pagrindinis evakuacijos kelias  
Main exit (evacuation) route
-  Atsarginis evakuacijos kelias  
Alternate exit (evacuation) route
-  Jūs esate čia (plano vieta)  
You are here




# PIRMO AUKŠTO ŽMONIŲ EVAKAVIMO PLANAS



## Evacuation plan of First floor




Tvirtinu: \_\_\_\_\_  
 \_\_\_\_\_



### Sutartiniai ženklai

-  Ugnies gesintuvas  
Fire extinguisher
-  Gaisrinis čiaupas  
Fire hydrant
-  Gaisrinės signalizacijos mygtukas  
Fire alarm button

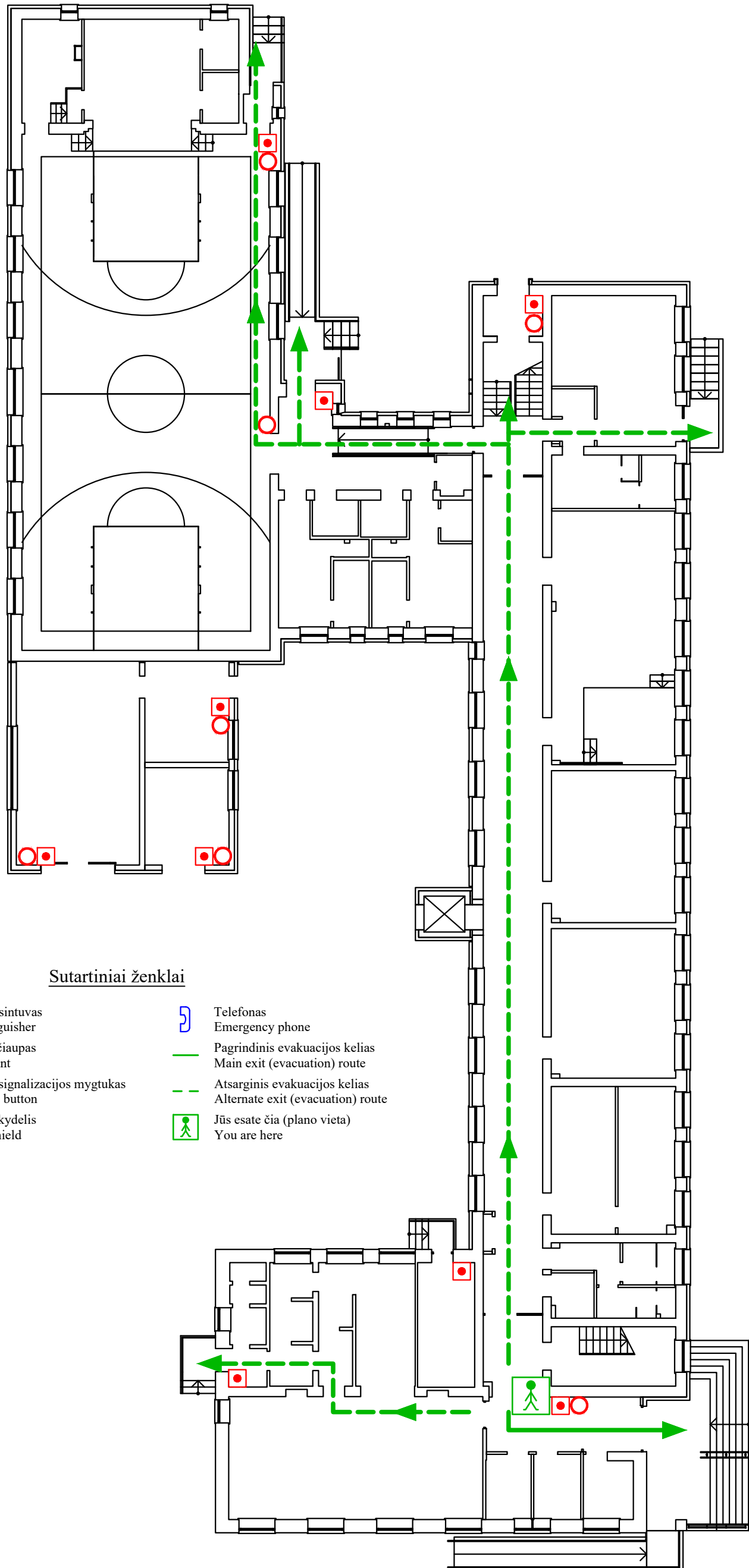
-  Elektros skydelis  
Electric shield
-  Telefonas  
Emergency phone

-  Pagrindinis evakuacijos kelias  
Main exit (evacuation) route
-  Atsarginis evakuacijos kelias  
Alternate exit (evacuation) route
-  Jūs esate čia (plano vieta)  
You are here

**PIRMO AUKŠTO  
 ŽMONIŲ EVAKAVIMO PLANAS**  
 Evacuation plan of First floor

Tvirtinu:

\_\_\_\_\_



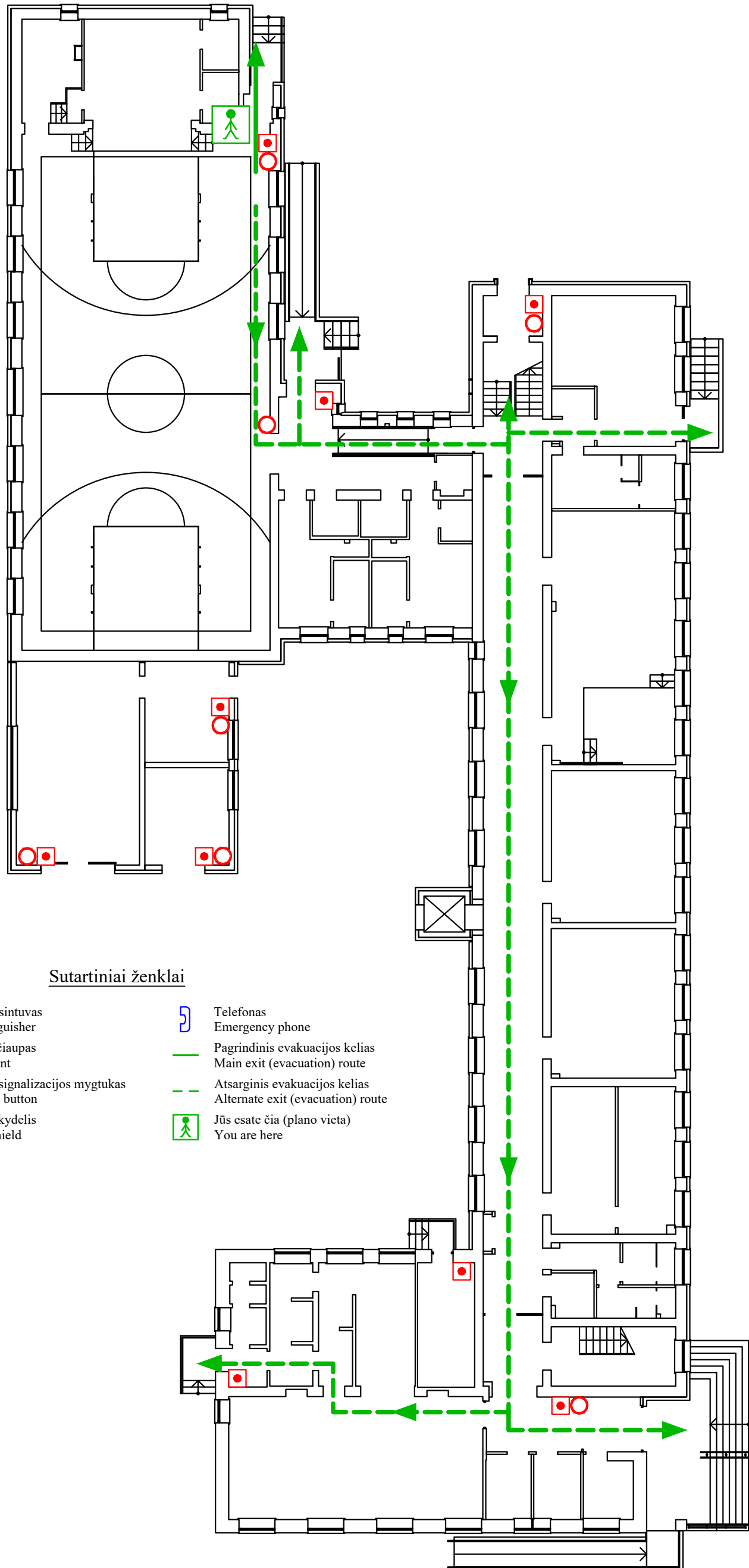
Sutartiniai ženklai

- |   |  |   |  |
|---|--|---|--|
|  | Ugnies gesintuvas<br>Fire extinguisher                 |  | Telefonas<br>Emergency phone                                       |
|  | Gaisrinis čiaupas<br>Fire hydrant                      |  | Pagrindinis evakuacijos kelias<br>Main exit (evacuation) route     |
|  | Gaisrinės signalizacijos mygtukas<br>Fire alarm button |  | Atsarginis evakuacijos kelias<br>Alternate exit (evacuation) route |
|  | Elektros skydelis<br>Electric shield                   |  | Jūs esate čia (plano vieta)<br>You are here                        |

**PIRMO AUKŠTO  
 ŽMONIŲ EVAKAVIMO PLANAS**  
 Evacuation plan of First floor

Tvirtinu:

\_\_\_\_\_



Sutartiniai ženklai

- |   |  |   |  |
|---|--|---|--|
|  | Ugnies gesintuvas<br>Fire extinguisher                 |  | Telefonas<br>Emergency phone                                       |
|  | Gaisrinis čiaupas<br>Fire hydrant                      |  | Pagrindinis evakuacijos kelias<br>Main exit (evacuation) route     |
|  | Gaisrinės signalizacijos mygtukas<br>Fire alarm button |  | Atsarginis evakuacijos kelias<br>Alternate exit (evacuation) route |
|  | Elektros skydelis<br>Electric shield                   |  | Jūs esate čia (plano vieta)<br>You are here                        |

## ANTRO AUKŠTO ŽMONIŲ EVAKAVIMO PLANAS

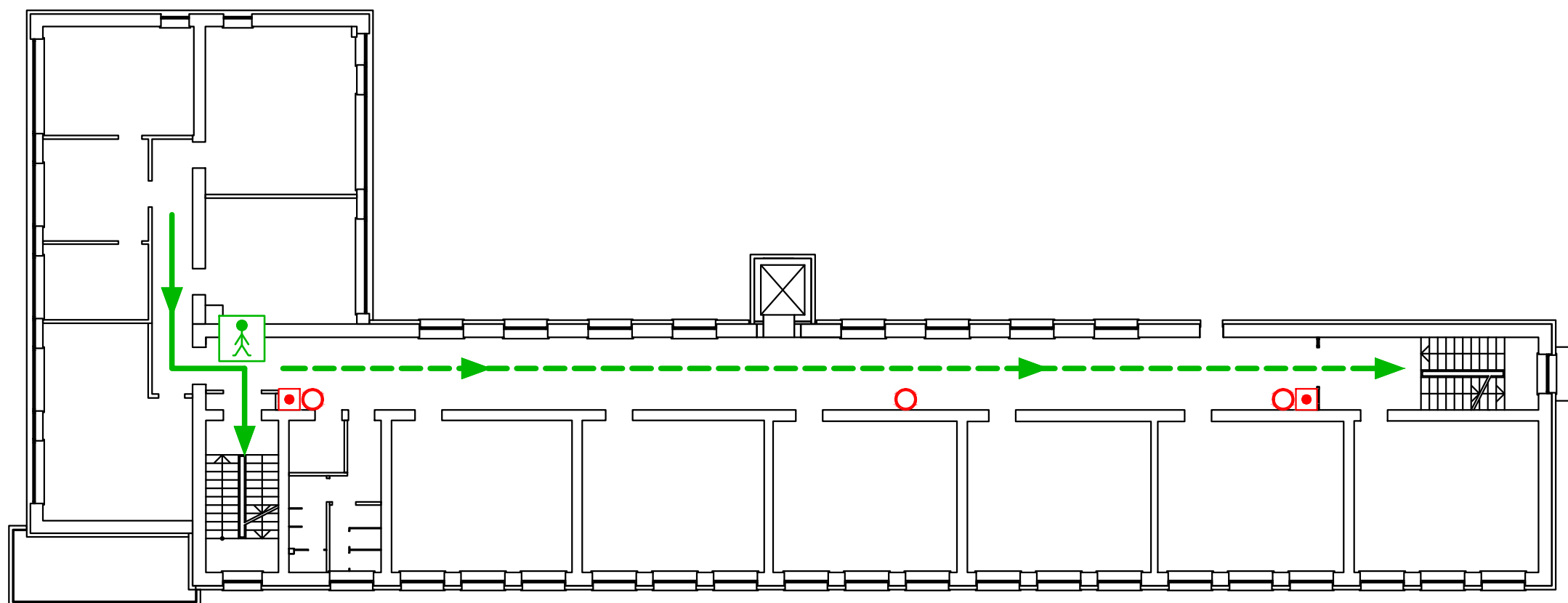
### Evacuation plan of Second floor

Tvirtinu:




---








---



#### Sutartiniai ženklai

-  Ugnies gesintuvas  
Fire extinguisher
-  Gaisrinis čiaupas  
Fire hydrant
-  Gaisrinės signalizacijos mygtukas  
Fire alarm button

-  Elektros skydelis  
Electric shield
-  Telefonas  
Emergency phone

-  Pagrindinis evakuacijos kelias  
Main exit (evacuation) route
-  Atsarginis evakuacijos kelias  
Alternate exit (evacuation) route
-  Jūs esate čia (plano vieta)  
You are here

## ANTRO AUKŠTO ŽMONIŲ EVAKAVIMO PLANAS

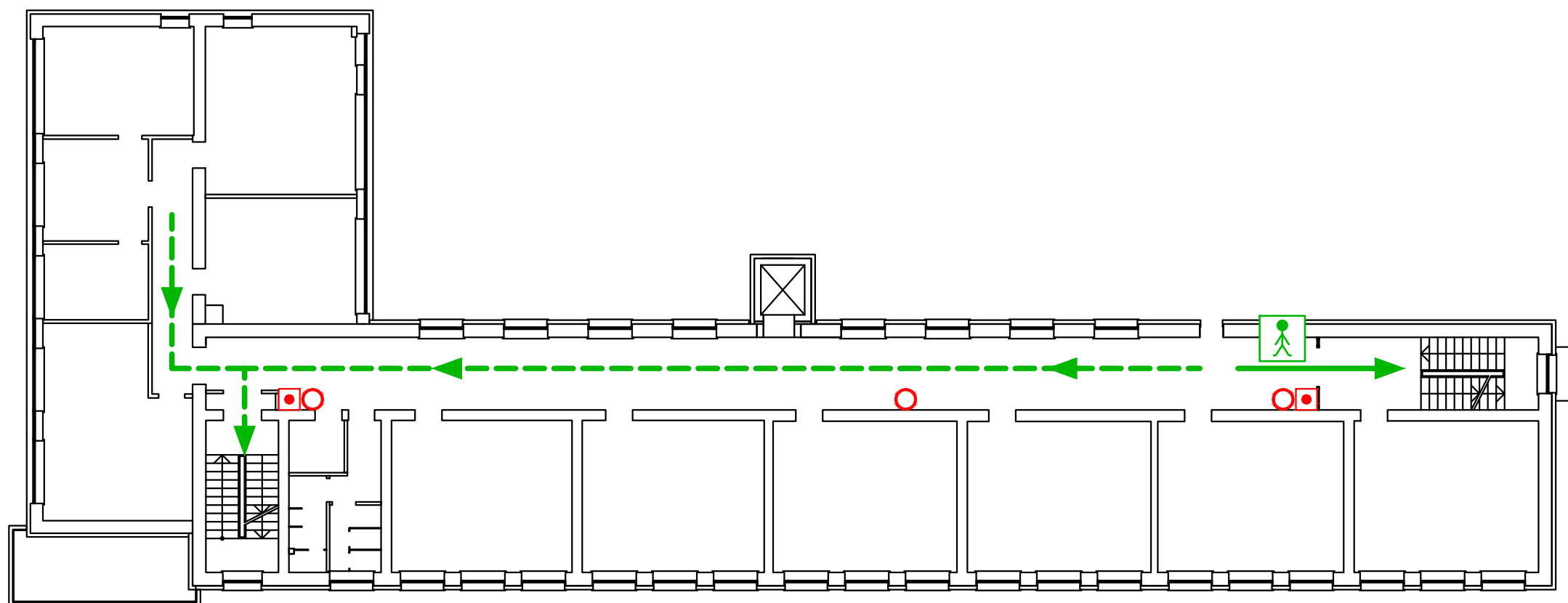
### Evacuation plan of Second floor

Tvirtinu:




---








---



#### Sutartiniai ženklai

-  Ugnies gesintuvas  
Fire extinguisher
-  Gaisrinis čiaupas  
Fire hydrant
-  Gaisrinės signalizacijos mygtukas  
Fire alarm button

-  Elektros skydelis  
Electric shield
-  Telefonas  
Emergency phone

-  Pagrindinis evakuacijos kelias  
Main exit (evacuation) route
-  Atsarginis evakuacijos kelias  
Alternate exit (evacuation) route
-  Jūs esate čia (plano vieta)  
You are here



# TREČIO AUKŠTO ŽMONIŲ EVAKAVIMO PLANAS

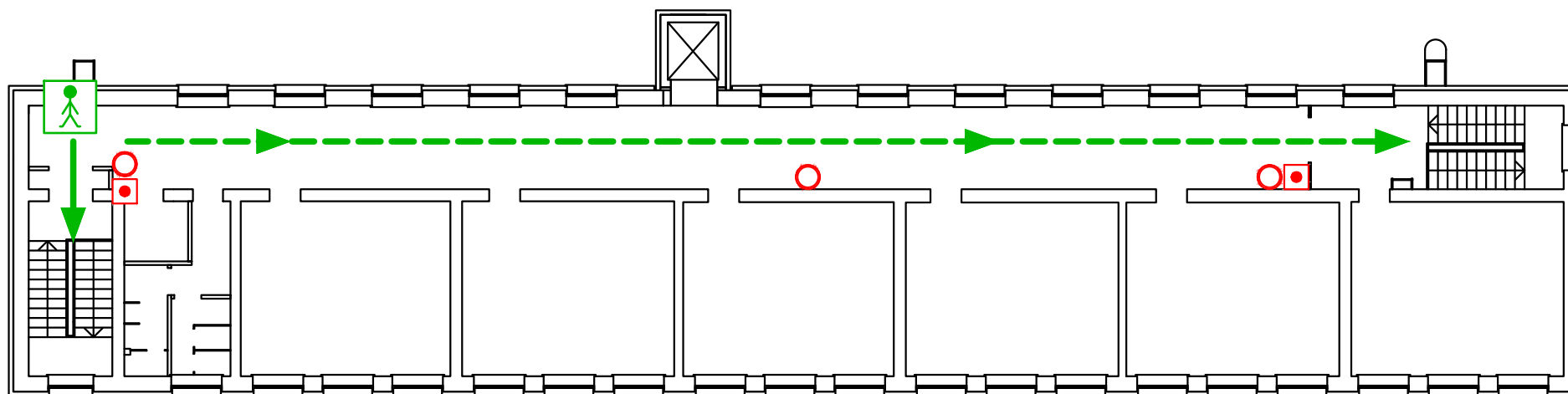
## Evacuation plan of Third floor

**FIRESTA**  
PRIEŠGAISRINĖS SAUGOS EKSPERTAI  
Laisves pr. 77E, Vilnius, LT-06155  
Mob. tel.: +370 687 77136  
El.paštas: info@firesta.lt  
www.firesta.lt




Tvirtinu:



\_\_\_\_\_




\_\_\_\_\_



### Sutartiniai ženklai

-  Ugnies gesintuvas  
Fire extinguisher
-  Gaisrinis čiaupas  
Fire hydrant
-  Gaisrinės signalizacijos mygtukas  
Fire alarm button

-  Elektros skydelis  
Electric shield
-  Telefonas  
Emergency phone

-  Pagrindinis evakuacijos kelias  
Main exit (evacuation) route
-  Atsarginis evakuacijos kelias  
Alternate exit (evacuation) route
-  Jūs esate čia (plano vieta)  
You are here

# TREČIO AUKŠTO ŽMONIŲ EVAKAVIMO PLANAS

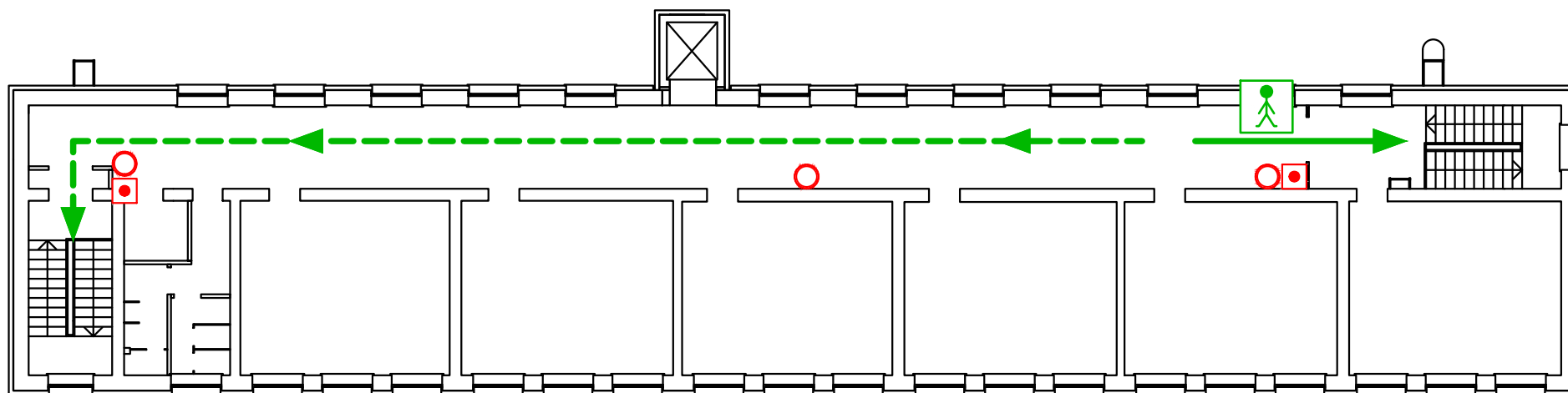
## Evacuation plan of Third floor

Tvirtinu:




---








---



### Sutartiniai ženklai

-  Ugnies gesintuvas  
Fire extinguisher
-  Gaisrinis čiaupas  
Fire hydrant
-  Gaisrinės signalizacijos mygtukas  
Fire alarm button

-  Elektros skydelis  
Electric shield
-  Telefonas  
Emergency phone

-  Pagrindinis evakuacijos kelias  
Main exit (evacuation) route
-  Atsarginis evakuacijos kelias  
Alternate exit (evacuation) route
-  Jūs esate čia (plano vieta)  
You are here